

SERCO

LOADERS

A GRYB COMPANY

LIFTING EXPECTATIONS

7000 SERIES



LIFTING EXPECTATIONS

From its inception, the SERCO 7000 has been one of the most popular and well accepted knuckleboom loaders in its class. Its light weight, speed, strength, and reliability have made this model extremely popular in multiple industries such as forestry and scrap material handling.

Lift Capacity

7,776 lbs. lift capacity at 8.6 ft. radius (less weight of attachment).

Operator Platform

High visibility operator platform with out-of-the-way valve arrangements.

Boom Reach

Includes 20 ft. standard boom with additional length options of up to 25 ft. available.

Stabilizers

Telescoping A-frame type with 110-5/8" spread at grade level for adjustment on uneven terrain.



Hydraulic System

Tandem hydraulic circuits to allow simultaneous operation without power loss.

Tandem gear pump providing 30 & 30 GPM at 1,400 pump RPM.

Stack type control valves located under seat for increased operator visibility and safety.

55 gallon truck frame mounted hydraulic reservoir with high capacity, 10-micron return line filter and removable access cover.

Folding joystick controls standard. 4-wire reinforced hoses in all pressure applications.

Oversize main pressure and return lines with bent tube-type fittings to eliminate heat problems.

Miscellaneous

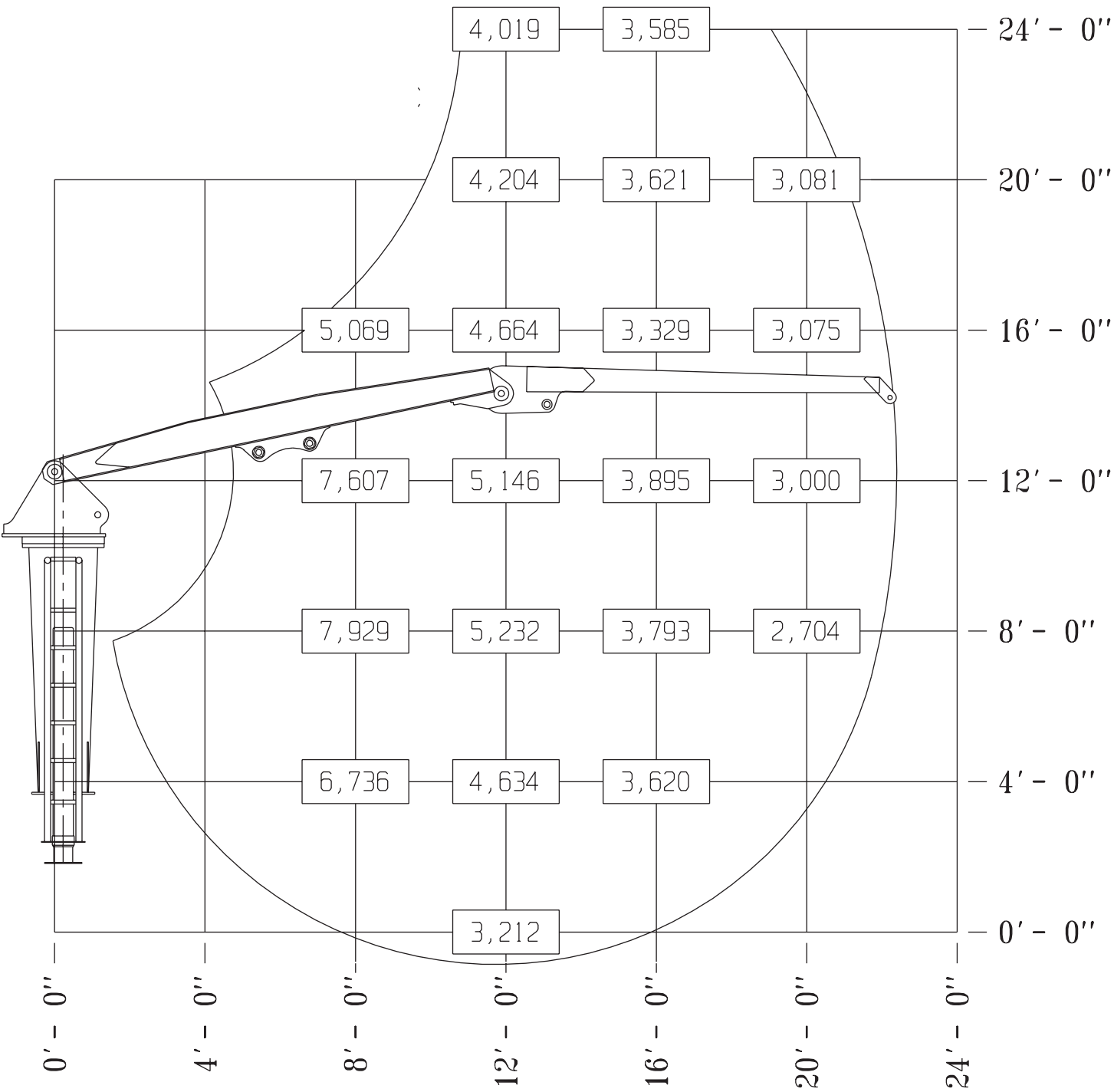
- LED light kits.
- Full range of attachments including continuous rotation grapples.
- Side-mounted aluminum tank built to SERCO specifications.
- 572 degree rotation on turntable bearing.
- Bolt-on gland cylinders.



DESIGNED FOR EXCELLENCE

LIFT DIAGRAM

Capacities shown are maximum theoretical lift capacities based on loader system pressure rating indicated, loader is mounted on adequately sized vehicle, stabilizers deployed in down position and the entire unit is on firm, level ground.



NOTES



YOUR NEW LOADER AWAITS!

CONTACT OUR TEAM TODAY!

(218) 834-5118

serco@sercoloaders.com

sercoloaders.com

